

Courtney Road Colliers Wood, SW19 2ED

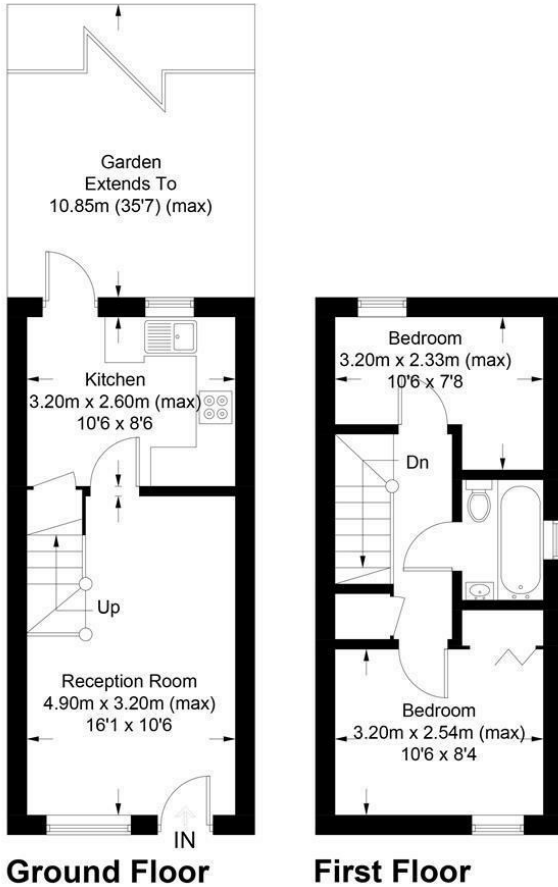
£439,950 Freehold



This is a modern two double bedroom, freehold, end of terrace house, with 35' private garden and off street parking. Located moments from the High Street and Northern Line at Colliers Wood, the property has the usual benefit of off street parking and is a fantastic purchase for a family looking to buy in the area.

Courtney Road, SW19

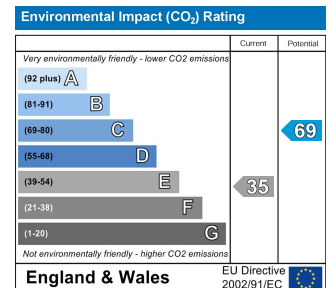
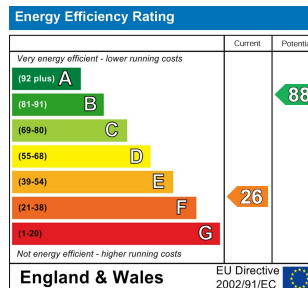
Approximate Gross Internal Area = 49.2 sq m / 529 sq ft



This floor plan is for representation purposes only and is not drawn to scale.
The Gross Internal Area includes outbuildings shown on the plan.
 Whilst every attempt has been made to ensure the accuracy of the plan measurements of doors, windows and rooms are approximate only and should be checked before making any decisions reliant upon them.
 Copyright Bespokeplans.co.uk (ID507564)



- Two Bedrooms
- Modern Build
- Private Garden
- Off Street Parking
- Close To Transport Links
- Central Colliers Wood Location



For Free Mortgage Quote and Best Mortgage Rates, call an Ellisons Mortgage Advisor on 020 8544 0518



Although these particulars are believed to be correct, their accuracy is not guaranteed and they do not form part of any contract.

Celebrating 30 years of successful Sales and Lettings in Merton

